



Beaufort County Public Works Stormwater Infrastructure Project Summary

Project Summary: Woodbridge Subdivision - Parkside Drive

Activity: Routine/Preventive Maintenance

Narrative Description of Project:

Repaired sinkhole.

Duration: 6/7/16 - 7/20/16

2016-624 / Woodbridge Subdivision	Labor Hours	Labor Cost	Equipment Cost	Material Cost	Contractor Cost	Indirect Labor	Total Cost
AUDIT / Audit Project	0.5	\$11.75	\$0.00	\$0.00	\$0.00	\$6.62	\$18.36
HAUL / Hauling	18.0	\$432.45	\$148.11	\$679.90	\$0.00	\$265.71	\$1,526.17
SD / Soft Digging	6.0	\$140.94	\$26.04	\$22.60	\$0.00	\$92.67	\$282.25
SR / Sinkhole repair	67.0	\$1,535.36	\$81.73	\$108.10	\$0.00	\$971.91	\$2,697.10
2016-624 / Woodbridge Subdivision Sub Total	91.5	\$2,120.50	\$255.88	\$810.60	\$0.00	\$1,336.91	\$4,523.87
 Grand Total	 91.5	 \$2,120.50	 \$255.88	 \$810.60	 \$0.00	 \$1,336.91	 \$4,523.87

Before

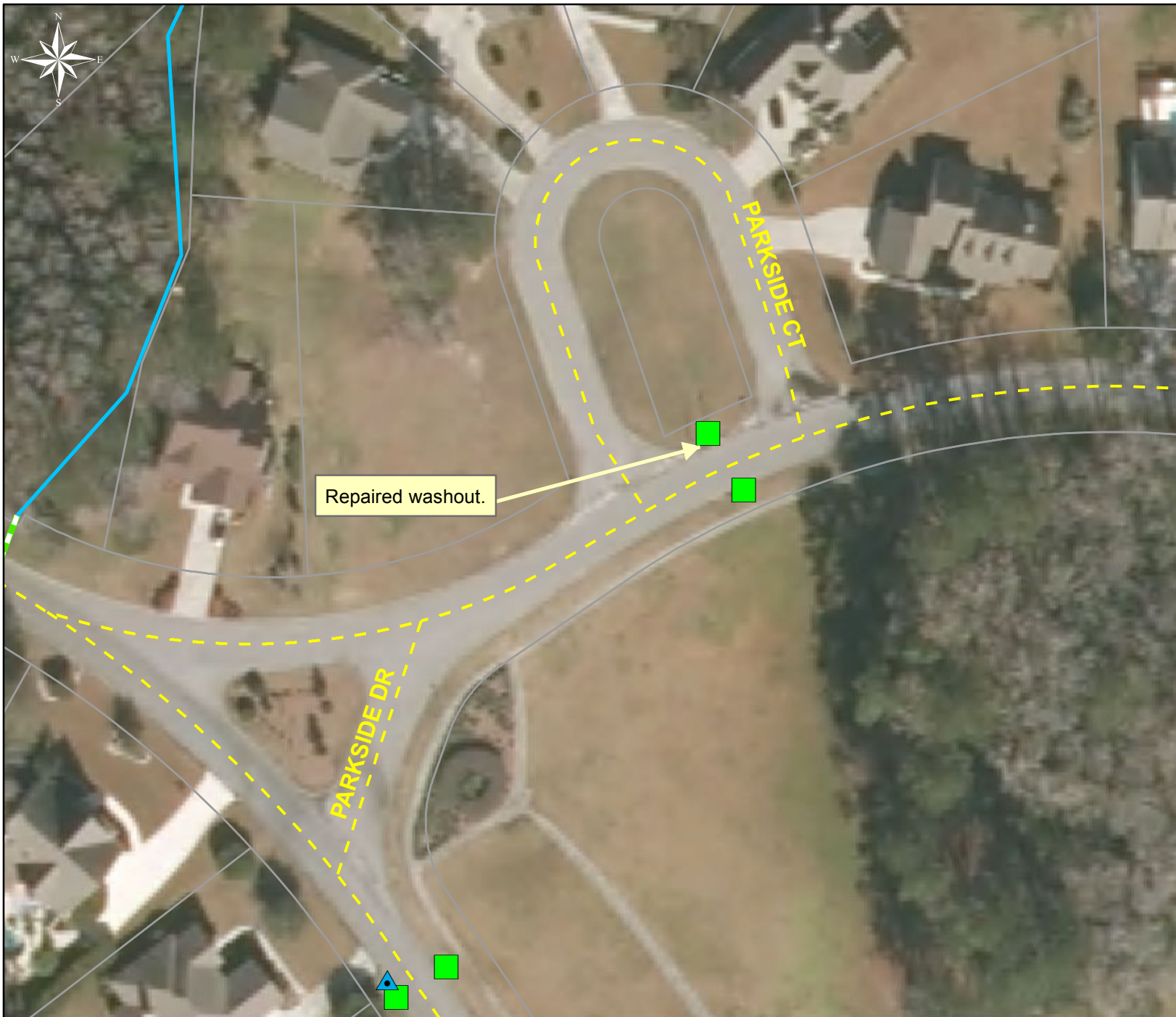


During



After





Project:
Woodbridge
Subdivision-
Parkside Drive

Activity: Routine/
Preventive
Maintenance

Project #:
2016-624

Township/SW Dist:
Bluffton/9

Completed:
July 2016

Legend

Drainage Type

- Access Pipe
- Bleeder Pipe
- Channel Pipe
- Channel
- Stream
- Crossline Pipe
- Driveway Pipe
- Lateral
- Lateral Pipe
- River
- Road Pipe
- Roadside
- Roadside Pipe

0 15 30 60 90 120
Feet

1 inch = 67 feet

Prepared By: BC Stormwater Management Utility
Date Print:08/31/2016

File:C:\project summaries map\Woodbridge Subdivision-Parkside Drive_2016-624